

Sharing Letters



DMC

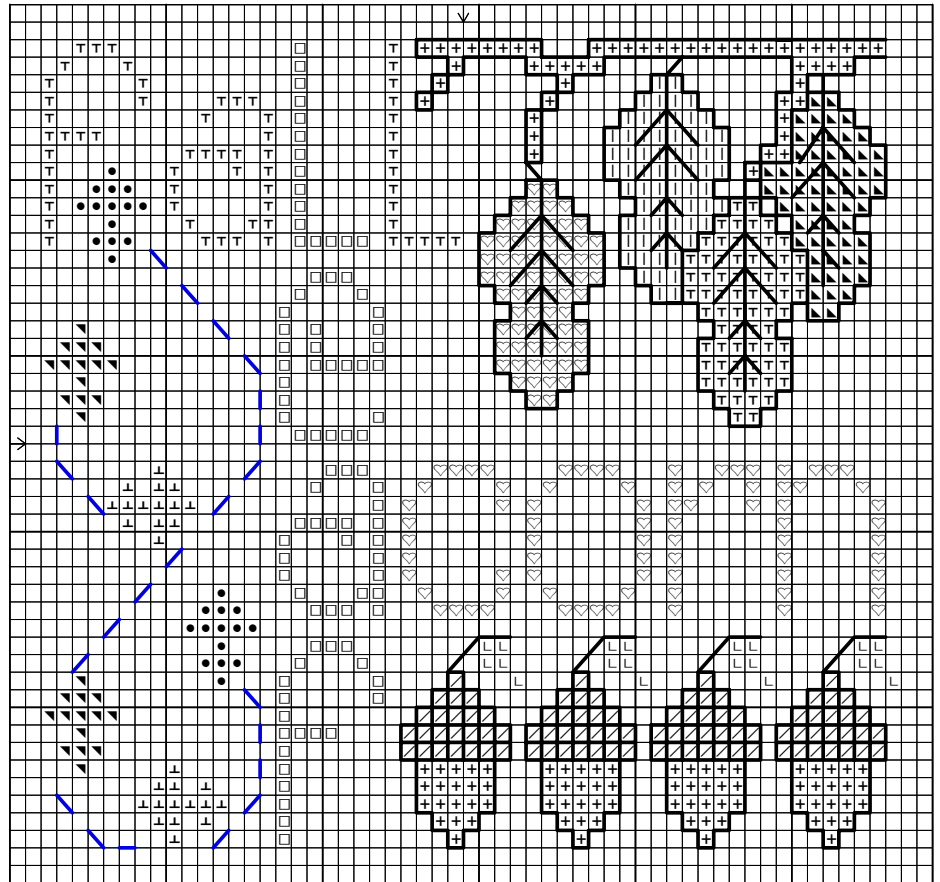
L	319		3826
T	829	▲	3829
+	838	♡	3857
/	840		

Blended: DMC/Glisson Gloss

- ▼ 1 strand 319/1 strand 910
- ⊥ 1 strand 801/1 strand 908
- 1 strand 3826/1 strand 811

Weeks Dye Works

- 1326 Rust



Backstitching – Breeze around leaves – 1 strand of blue (311)
 All other backstitching – 1 strand of black brown (3371)

Stitched on 28 count Kiwi Lugana over two threads with two strands of floss.
 Stitch Count – 55 x 46 Approximate finished design – 3 3/4" x 3 1/4"

Product Sources:

Fabric: Country Stitch
www.countrystitch.com
 28 ct. Kiwi Lugana

Thread: DMC
 Glisson Gloss
www.glissongloss.com
 #811, #908, #910

This is a copy and share pattern. Please feel free to pass onto a stitching friend. It cannot be kitted, copied and sold, or displayed on personal websites without the permission of San-Man Originals. All rights reserved.